



542

Traversa idraulica a pantografo pompa manuale
Traverse hydraulique à ciseaux avec pompe manuelle
Hydraulic jacking beam with manual pump
Hydraulischer Scherenheber mit Handpumpe

542A

Traversa idraulica a pantografo pompa pneumatica
Traverse hydraulique à ciseaux avec pompe pneumatique
Hydraulic jacking beam with pneumatic pump
Hydraulischer Scherenheber mit pneumatischer Pumpe

OPTIONALS



542.1
H = 60 mm
N° 2 Pz.

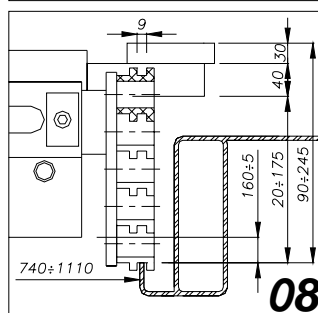
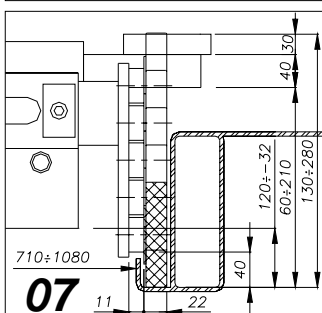
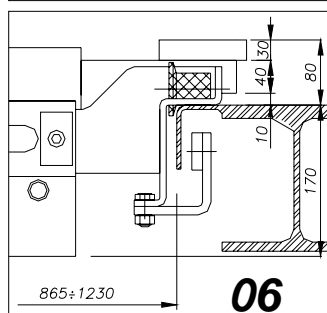
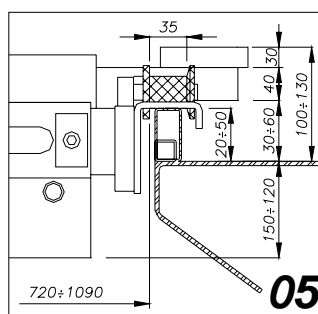
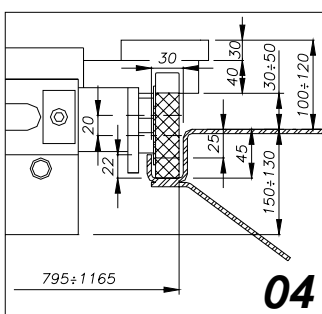
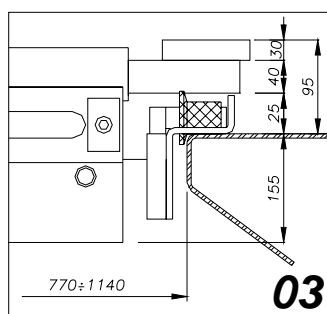
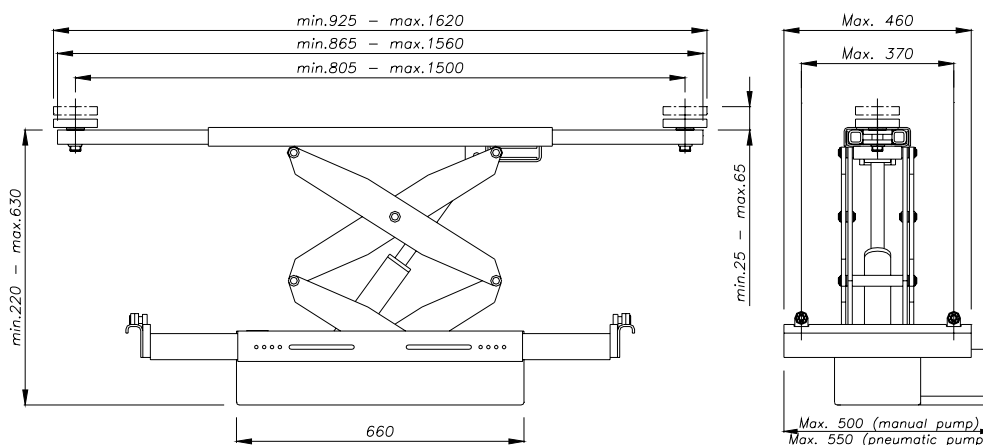


542.2
H = 90÷130 mm - N° 2 Pz.

- Bracci telescopici
- Sicurezza idraulica in caso di sovraccarico
- Sicurezza idraulica in caso di rottura dei tubi
- Tamponi in gomma
- Telescopic arms
- Safety-valve against overloading
- Safety-valve accidental breackage of feeling pipes
- Rubber blocks

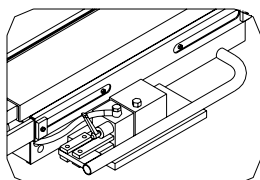
- Bras télescopiques
- Sécurité hydraulique en cas de surcharge
- Sécurité hydraulique en cas de rupture de tuyauterie
- Tampons en caoutchouc
- Teleskoparme
- UL-Sicherheitsventil
- SB-Sicherheitsventil
- Gummiklötze

DATI TECNICI	DONNES TECHNIQUES	TECHNICAL DATES	TECHNISCHE DATEN		542 542A
Portata	Capacité	Capacity	Tragfähigkeit	kg	2000
Spostamento verticale del carico	Déplacement vertical de la charge	Lifting displacement	Hubhöhe	mm	410
Estensione min. (bracci chiusi)	Extension min (bras fermés)	Min. extension (arms retracted)	Min. Aufnahmebreite arme voll eingefahren	mm	925
Estensione max (bracci aperti)	Extension max (bras ouverts)	Max Extension (arms extracted)	Max Aufnahmebreite arme voll ausgefahren	mm	1620
Passo delle ruote di scorrimento min.	Ecartement der roues de écoulement min.	Wheel base min.	Achsabstand der Laufrollen min	mm	710÷865
Passo delle ruote di scorrimento max.	Ecartement der roues de écoulement max.	Wheel base max.	Achsabstand der Laufrollen max	mm	1080÷1230
Peso della traversa	Poids	Weight	Gewicht	kg	130
Temperatura di funzionamento	Température d'opération	Operative temperature	Betriebstemperatur	°C	-10 +40

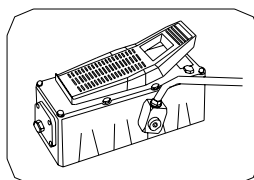


Rullo/Galet/Roller/Rolle

Sollevatore/Pont élévateur/Lift/Säulen



Pompa manuale/Pompe manuelle
Manual pump/Handpumpe



Pompa pneumatica/Pompe pneumatique
Pneumatic pump/Pneumatischer Pumpe